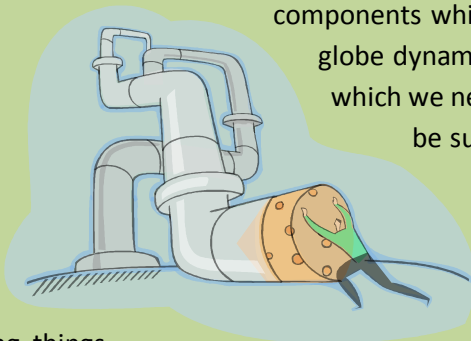


SPATIALLY MODELLED ENVIRONMENT

Introduction

The environmental components as land, water and air are to be viewed as parts of the body which need to be viewed as holistic and the functional requirements of all the parts to make the body to meet the purpose are interrelated and air is the key component which give us all that is needed from basic to comfort which is true to the core of environment too, but which is less felt as the same is filling, and need not be drawn for the purpose. Ecosystem thus deals with this connectivity between the

entire
for
never
the soul



non living things

the performance that we need to shift our thoughts and conduct to include anything and everything for the best of people and situation which needs due compliments and corrective measures to orient them to purpose. The view on the picture shows when anything is preserved, sustained, blocked, the consequences that may come is the collapse of the entire system, which need to be channelized.

components which makes living, evolution to progress and to make the globe dynamic. The progression must ever be in line with the nature which we need to understand the nature and flow and the same can be sustained to protect the serenity of nature which must be

and not scene and if the soul is focused, all the components of the biotic, living system like plants, animals cooperate with us in accomplishing ever yielding environment. It is to be noted that even the

have emotional binding and attachment that will alter

Ecosystem

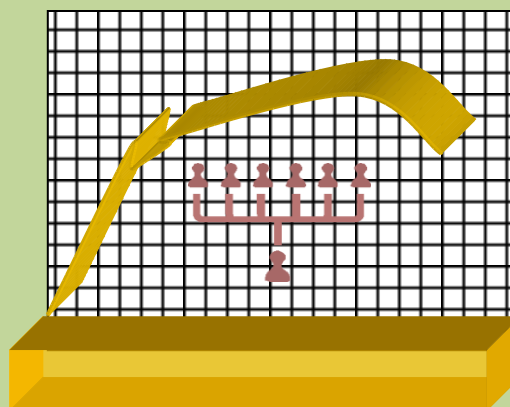


The picture shows the ecosystem and its connectivity which is not rigid, with margins, but for its complete reach that gives the evolution. The growth pattern of every individual is to the lag, log, stationary and discharge phase. The duration which he remains in a phase determines his life and it is the relaxed state of mind and openness makes the purpose reached.

Growth pattern

The growth pattern of an ecosystem lies in the ability of living beings to get accommodated, move up by taking the best of nutrition skills from the environment, surroundings, reach the aspired level and remain there for saturation, discharge the potential and decline in the end phase of life, where there can be stagnation, which is to undo for redo, unlearn for relearn to move up which must be a part

of the system , as due sleep every day, and a nap in between, a short break or rest in needed in between. Unfortunately the existing scenario use the human labour continuous for the purpose of rapidity balancing the same with money, work pressure and so on which will certainly deprive the quality of work. Any creature needs due rest, due change of place which makes it fresh, live to the purpose. The observation on any growth pattern, progression falls into this basic curve. In the lag phase the material gets acclimated to the surroundings, the situation to which it is exposed, the constraints it has been imposed on, and after which it starts responding, which is certainly the characteristic of the same which cannot be defined common of the material, but on shape , texture, the loading, ability of all to take up the loading and so on which is to be viewed holistic, something more than that of the sum of components, this comes under log phase and for the material got acclimated and the nourishment and care is more, it starts progressively, exponentially responding choosing what is needed , what makes it comfortable. When it attains the self sustenance, to live on its own, satisfied, it becomes stable and starts yielding consistently after which it becomes deprived of nutrition, nourishment and starts taking its own strength for survival and reaches extinction, break or death , failure whatever the situation may be. Every facet of life is , every facet of action, every facet of understanding falls within this. The top curve is the true stress strain curve and the bottom one is engineering stress strain curve. Stress is the ratio of load to area which is the work taken for the expertise and potential one has and the strain is the ratio of change in dimension to original dimension on the application of load. This shows only when there is exertion of expertise, there will be change. This needs environment to be refreshed, added quite often. The change in one direction ultimately leads to change in other direction. When we take the special dimension, there will be changes in all the three direction, subjected to the direction in which the load is applied. The strain is thus varying in the true situation, where the same at any instant of time on the application of a load, is to the original dimension it has at that instant of application that the leads to ultimatum and remain ever in plastic mode, will not gain back its initial status, and yielding to the core of finest particle if the load is changed. Whereas the engineering situation, makes the strain as change in length to the initial length the specimen has and it remains the same through out to find strain at any instant which leads to breaking. As the engineering system, is rigid for average performance that we find how the system fails, breaks to the same load, instead of finding how it responds if the loading is changed and use the material till that stage where the time, deterioration, the connectivity of the structure with the environment, its effective use do not find a place in design, which is a lag.



Engineering growth curve



True growth curve

The engineering design on the whole is for average performance where the true status of the individual units differs in response, that there remain negative emotions and a feel of neglect. Engineering is the effective use of the resources for the well being of all , creations of nature including living and non living, I transform this concept to education, the art of living which should be construed on the base that everyone and everything is special and deserves its due place and adds to the entire globe, and everything and everyone should find their ultimatum, the best of them in every situation. When the above pattern is recognized that one can never grow in linear pattern which is ideal, but responds to his best of information and knowledge to be non linear, we find adaptation is very much important to provide comfort to every individual. Each individual can move with other, the co creations only to compliment them, to correct them to give out their best as the best is known to third party easily than the involved for they take the responsibility as burden which is actually the joy. If you move to give conviction and get the same, there will be plenty of contributions and the openness makes every task, change amazingly simple. Mood plays the major role, the response of anything and any one to a situation must be given out as such, which is emotion and that builds the true personality and the personality taught as of now for the corporeal world is engineered where we don't reach ultimatum but break. Basic emotions are specific to an individual that must be attended to as the same bounds to be the common of public, which derives their support not for the quality but for authority, dominance and influence in the existing scenario.

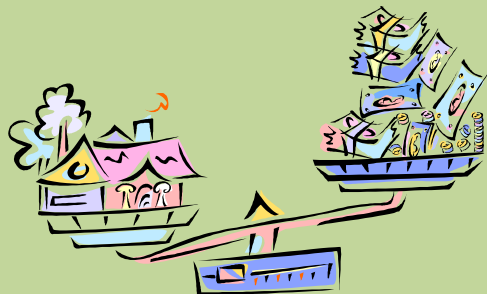
The favorable growth occurs to one when he remains in his comfort zone, with what he has, and aspirations to gain what he needs to move up, simply when he balances his personal and professional status for his own efforts. I ever make a point as the growth of society is the growth of an individual that there should not be compromise to meet the situation, but compliments to meet the growth, the best of any situation which is progression. The compliment is not the appreciation, but the absolute

understanding of one as his own strength and weakness, providing opportunities and tips to enhance. Thus the balance is not between the resistance and potential, but the potential pulled by resistance. We name it as ecological balance if between environmental factors and biotic potential to reproduce, as economic balance if between resources and the trade or exchange potential, and social balance if between societal pressure and transcendence potential and all these three social, economic and environmental demand fixes the sustainability factors of any demography and shows indicators of failure and less achieved, because the basic core is not understood that we cannot sustain anything and every creation evolves. When it is viewed as progression, the economic, environmental, and social potentials are the overlaps of interest that compliments, enhances other that we reach the progression in the indices known till this time as sustenance indices which are the indices of well being that is all. These indices are good food, good drink, good sanitation, healthy life, education opportunities, gender parity, good governance, income distribution, population growth, environmental quality, energy consumption and resources, biomes and biodiversity, ecosystems, genuine saving, GDP, public departments, employment. Since the balance is viewed till this times as nullifying factor between the bad and good, we got the remains and which is by theory of commons, the bad as the same is easy and simplistic, reaches every one with conviction that they need not strive much to reach the desire. But the rules, regulations and restrictions, made the good as something hard which is really not so, and amazingly easy, multifold than bad, which will be realized if we include anything and everything, complement each other by criticisms and suggestions that they progress instead of sustenance being used for survival alone and the reserve of potentials goes unutilized for they cannot accommodate bad, orient them to good. In the existing scenario, one is permitted to do only bad on his own, and all good if innovative needs due permission most of which on that move perish for several different negative emotions and forces that people wish to be inert or towards bad. The rules, regulations should never be restrictions but flexible enough to accommodate all good in line with the evolution and which is for every individual that he is personally satisfied which will reflect in his professional output cumulating to global growth.



We can accomplish balance by pull of the potential to choose the best of resistance which get nourished, enhanced and finally meets the pull on their own. Since potential is the skill to overcome the problems effectively that if the resistance is more pronounced, the skills are more polished and refined. Over nutrition leads to obesity, where perfect choice of nutrition finds their way in due course of time and they reach astonishing levels of immunity for their exposure. For the nature being the superior force, the care taker of all creations, none is deprived of opportunities; they are in ample before every one and we keep our eyes closed for we see the forerunner reaching the goal which eventually lead us to lose. For every creation to find its place, he need to realize there is no competition outside, and he is his own boss to choose his best of interest as career. There is no need to quote examples as they are plenty and the recent interview with a metropolitan citizen said, he could have bought a ground of

land, for the amount he paid for his education then, as the value of land has increased twenty times but the risks involved in employment to get the minimum salary after taxes and levies is not satisfying.



Balance is not the resources for money for which we focus throughout our life on material gain adding more and more sophistication in the search of which we lose our personal life, our fair share to our own family and fail to contribute our best to the family and society, degrading them or providing surplus and finally end up with nothing accomplished except the money and possession which is only a small fraction when ones share to his own personal life, to

his family and to the society is much more than this. However great may be the money one provides as his share, the same cannot compensate his own responsibility that this external balance what has been viewed as achievement and what has been the key factor for the existing scenario of rapidity in anything and everything and which is taking the global society to negative emotions and keeping the world peace a day dream ever.



In the move to make everything an achievement, one loses his connectivity to the society and grabs every opportunity and fail to do his best for the burden that he furthers his negative attitude which finally suppresses him to the core. The potential or the skills are to be ever enhanced for the personal development which on satisfaction and saturation should yield to others which indicates the distribution of resources which had ever been addressed as equitable use of resources. The same had not been accomplished till this time because the resources what an individual to a nation has , is accumulated for its own use, for its uncertainty on the availability ever but is to be understood that the

resources are continuous and gets in when there is a place for the same in the system. The resources will move towards only the receiving end which should not be viewed as low in level but capable of accommodating and giving something in return. Nothing by nature is free, it has its own due which gets collected by itself and we all are tools that the picture makes one realize not all his potentials are to be sold some are to be served to keep the balance.



The efforts taken towards involving the society to maintain sustainability failed because where there is no personal benefit involved, there will not be concern. To make the personal benefits, there came in corruption to every facet in administration and governance that they go hand in hand who are to check the performance of each other for the benefit of common civic. This is for the situation corruption has been reinforced into governance and the living becomes restrictive. When every one has different needs and performance for their skills, and when

the regulations are for the masses, due to the restrictions, they violate the norms which can be for conviction if the governance remain flexible for each individual as every opportunity has different choices and will be viewed differently for their exposure and perception will be different.



This is exactly the balance experienced so far for the sustainability, the biotic potential the push and the environmental resistance as pull were to get balanced each other nullifying the effect that the objective is to maintain or to keep up the status which is there in every stage of life too, as survival, where there is no risk. This is with the mass where the identity is hidden to get the benefits for the masses on average or no performance.



This is the progressive balance mostly for the individuals who in their pull of potentials, complimented by others as push to suggest and criticise to better performance that the effect is not nullifying, but supplementing the resources, assisting to get the best of choice with involvement of others.

The pictures below show the choice of different individuals on balancing their self and all are perfect for them that we can not generalise the way they balance their body. No one is wrong in the same way the right of an individual should be given for their reach and none can be restricted to follow the general way which may not be comfortable for the extraordinary to whom we deny the freedom of living to their conviction.



When the living is for the common procedure there is no way for the individuals to show their uniqueness, creativity that they become less performing, gloomy and for the routine, finally they

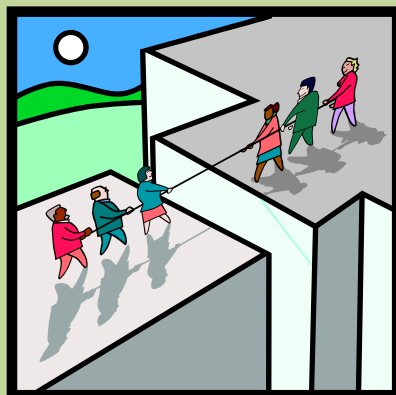
discharge duty mindlessly which is giving way for all distortions in governance. When they are allowed to select, choose, design their environment, it is for their best and when they are made responsible there is no way for blame, anxiety and coercion that they welcome the opportunity, remain responsible and enhance every component with inclusion. Thus procedures are to be made specific to an individual.

We shall elaborate this for better perception with the following example.



acceptance.

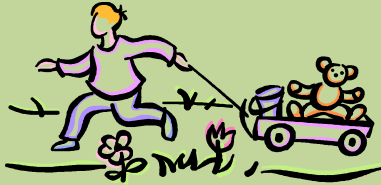
One may want to get elevated by seniority where other with potential to contribute may wish to move up for his contributions. The vacancy need not be restricted and the system should be in such a way to accommodate both as there are a lot of scope for everyone to give out their best that everyone can be accommodated to their preferred future. This one who needs elevation by seniority moves up to the routine, where one with due contribution moves up to a created designation that he will ever move in his own way without wasting his expertise, and will not be in race for which he gains social



When the adaptation is for survival, natural selection is for living. When the constraints are not to be overcome by an individual for the ethical dilemma of external pressure, personal benefits, they will be accepted to live with by adaptation where the interest of the individual is suppressed for survival and there we cannot expect his mindful discharge of duty. But when the choice for the potential and confidence is the selection by the individual, he will be involved to give out his best for which he need to be given freedom to design his own life where he ever lives enhancing his skills to reach the aspired level. Thus adaptation is sustainable, where as natural selection is progressive.

Darwin's theory of natural selection is as simple as the choice of the fittest to get his life in most profound risky situations. It depends on three facts as the individuals are unique, the traits are inherited from the ancestors, the differential variations affect some on the carrying of life.

Individuals are certainly unique as their perception on the incidences differs, no two individuals think alike. The heritability is the traits passed to the genes through mutagens, and not necessarily from ancestors, but to the exposed situations of individuals and their response. This could well be conceived as registry of responses to events as experience, the failure of those fittest for not portraying themselves fit for the situation to give for the dominant, as good are not always strong.



apply

professional and personal life altogether with ultimate efficacy. For the individuals are unique, there is no point in making regulations and procedures same for all, though the same is for intellectuals or average as bench marks. In order to get the best of every individual, make them in their comfort zone, we need to present them the following flexibilities.

For this one's perception of life, be it education, economics, sociability, governance, administration and so on differs for his driving need, interest, the openness he has to acquire knowledge and the capacity to interpret, understand and the concept to real life situations which extends to balancing

The emotional balance and intelligence of people differ and there are merely 80% of the people who do not want to take risk, hence decision, but expect someone to instruct them what they ought to do, and the rest twenty percent have the leadership qualities by themselves by inheritance. But we design the living as restrictions for the comfort of 80% to which the rest twenty two are subjected and for their differential variations from the average, they don't take the procedures but will be identified as notorious and left as such in the stream, where they wander for thirst of appreciation and many times get caught in negative activities thus we find many of the terrorists and robbers, murderers exhibit amazing planning and execution for which the piling up of cases with law and order. At the same times some will be left drowned for lack of appreciation and remain below average for their survival. The leaders who come up are for the better performance of the procedure to average, that we lack innovative ideas and schemes from the planners. When this needs to be changed, we ought to recognize only skills which will be for their projected performance assessed for their individual output. Web education and e governance is the way to extract skills, and make every one come up as their best, then there is no comparison, everyone is focused with complete attention that he will be choosing an environment where he can perform his best.

80 % of the people who needs instruction and 20 % with leadership skills will be made to give out their 100% of they have an environment to groom as individuals with self competency.

The environment for each should have flexibility on quantity, time, Level of support, input, Difficulty, Output, Participation, Alternate goals, Substitute curriculum that making them perceive their life to their comfort id the objective of both governance and administration that everyone is inclusive and none deserves rejection and assessment to quantity but quality for his own enhancement with conviction.

Quantity



The volume of work to be done and the volume of material prescribed as basic requirement need to be done, but not to a prescribed amount every day but to their freedom to complete the same for evaluation and progression. This makes them read through without peer pressure, that they focus to perceive the complete concept and do the job to their best. The quantity to be understood

depends on the goals and scope of the skills he gains and is to the individual that the assessment on the projected work for evaluation as such on the qualifying certification is specific to an individual and is between him and the assessing officials for mutual conviction which must be transparent.

Time



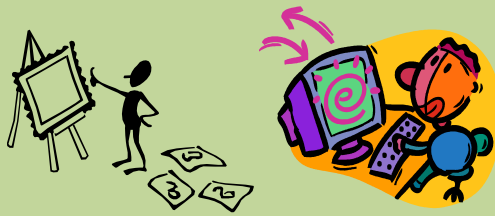
It must be understood that time is an illusion and is depriving the quality of work for the pressure it exerts that there must be complete flexibility on time of the living and must be individual specific. The goal is on the self improvement of one which never depend on time that he must have flexibility of time, for which online communication suits the best. One need not stick to time to present his work, present himself for promotion, present himself for an assessment on a general stipulated duration and time, but for his conviction at his own discretion. This makes one comfortable to give his best and to remain satisfied of his contribution and he remains safe as the stress to maintain time brings more of calamities. Yet it meets the demands of the globalised world on potential and man power, resources too.

Level of support

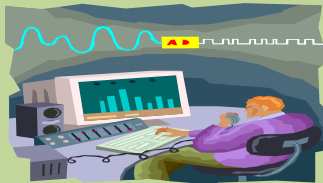


The level of support one needs depend on the confidence he has and the same must be to his needs only and not to make him uncomfortable. The best part of support to the core is to assure his employment, safe living that he gives his best for the inclusion he has in the system ever. For the improved life standards and refinement in information, for the knowledge and awareness, there are numerous options that the opportunities are ample to live, as unique contributing to the system as well. The level of support is the assurance given by the democratic governance the equality of status and opportunity that he gains individual dignity and justice. We need no single leader in governance and administration but the rules executed to the transparency that everyone gets the chance to perform in their own way comfortable for them. It is in no way make them less driven, to cope up with the flow but to find their strength and work for its enhancement.

Input



The input in the education had taking a transformation form black board to computers where the duty of the teachers is becoming more refined to make them oprient to information on the net, guide them to take right informationa dn complete perception that it integrates research into experiential learning that it is possible now to have parallel stream of research skipping the undergraduate and graduate programmes.The opportunities to career seklection narrows down with this but make their skills unique and special.This provides way for them to choose mode and media of education and present their skills for evaluation that education now becomes the right of an individual and is no more a burden but a pleasure.



The availability of internet and email communication make the stake hholding of public in governance more easy and effective that information reaches them at the right time and for which the governance need to be responsive and inclusive the suggestions and feed back which is coming form the public for the governance to serve them the best.People in administration do not realise the effectiveness of e governance that they live on papers and say the cases have piled up and for which the public need to wait but actually it is they who need to change and upgrade the system for computers have reached every government offices long before that they can no longer be optional.

Difficulty



This is certainly with the effort one should take with a job and more the involvement more will be the efficacy and there will not be hard work at all.I will say more one gets involved into the purpose of the job, as assigned to him for his best, there will come a situation of forgetting anything and everything around and that status makes his best performance. A job can be done for remuneration, promotional prospects, and appreciation, for the sake of gratitude or for the purpose. When all others makes expectation other than the outcome , the purpose, the efficacy will less but working for the purpose makes all happen without hardships as he involves himself into the job .The carrying out a job is hence on the view of the individual how he takes up a job as a mason who views building a wall, when other views the job assigned by his supervisor, where the same thing viewed as he builds a part of a beautiful church , where the divine force is going to remain, by the third one and that makes the difference. nothing is difficult, it all depends on how you view a job, though appreciation, remuneration, promotions help as driving forces, there comes a period when the physique do not cooperate for fatigue

and wish drives the mind to proceed with the job. Then there will be deviation from the purpose which is unique for every individual that he must be made to realize himself. Sharing to the core with one who can spare his potentials for you is essential for your side, and when one is in that position, where you are in absolute need, you shall contribute your best to them to life them up and which is true relationship which has no test, screen, blood, caste, creed, religion, colour etc, etc which had made relationship superficial drawn on virtue. Nothing is difficult, making it easy in presenting the fact, makes the concept go deeper and cause cooperation for which we need simplicity, which is awareness, knowledge, spirit of helping, and present it easy for the user. This is very much expected in governance who should be simple to the needs of the public, to know where they are, what they need and use their authenticity

Output

It is simply in making one open and expressive and what he needs and then getting him what he needs will be done with simplicity. Hence the personality is what he is true to the core, which makes him comfortable. The body language, pattern of analysis, perception differs from person to person and when a situation is presented to him his perception on the situation tells him who he is, and what his interests are that an description of anything can not be the same by all, but which is made same by mere reproduction of content which hides ones originality and suppresses his best from coming out, meting the basic requirement of content as curriculum is simply the reproduction that the professionalism is lagging these days. One should be made comfortable to speak what is in his mind, that makes him improve ever, bring him what he needs. Hence all the concepts of teaching learning process, the work completion need to be individual specific that they reach excellence with conviction and inclusion.

Participation

Participation makes him inclusive which will happen only by making him involved giving him due place and making him special, that getting into the task for the purpose becomes essential for him with conviction as he is made to be responsible for him and he is to enhance himself for what is needed. He gets into cooperation with others as there is no comparison and each one has ample of opportunities and selection is to his wishes and the same is not restrictive and final and he can always take another chance if found the way he chose is not to his nature. He can either enhance the skills needed or take an alternate as

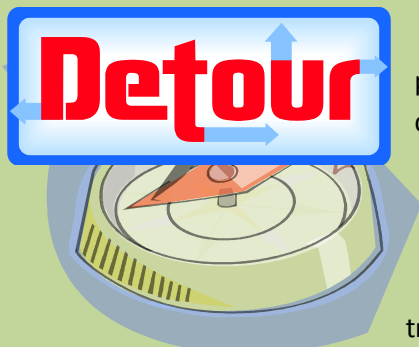


everything in the world is dynamic including creations. The contribution and participation is to shift the task much ahead of the expected levels. If the contributions of participation are as shown, it will only lead to perception of individual skills where the task remains the same. Hence each has to do their best from their position, one to push, another to pull, others to move in the expected direction that there will be



changes. This is how the participation has to be viewed as individual specific form where they are towards the common goal and there cannot be copying or mere reproduction for progression.

Alternate goals



Any opportunity has several different solution and numerous paths that there is no one way or defined number of ways. The path depends on the skills of one which is inherent and cannot be assessed for assumptions but specific to a performance that everyone has their due role to play in the progress of the global civilization. There cannot be plans for the masses anymore which need to be understood as the same leads to degradation only. Civilization has travelled a long way that they don't need someone else to decide their comfort for which the governance even do not derive support many of plans that they seek majority to execute their plan and the same fails for the plans are not for the public but for themselves. It must be construed to the core for the lack of information and lag in communications, opportunities for exposure and finding ways to live were limited earlier which was the reason for competition, ranking and so on and which is not there now for the use of virtual space and the internet and which can serve the purpose of human rights to the core for a long time that it is time for us to shift to use virtual space wherever possible, and to whatever extent possible. There will be complimenting environment for all to design their own life and take up chances of enhancement specific o their purpose that nothing will go wrong any more. Thus one can have alternate routes always till he finds both his brain and soul works as mind that there will be refinement and for conviction, there will be a situation to meet global peace. For the unlimited ideas to reach a designation, for the infinite connectivity it is always possible to detour in between without losing anything which makes the illusions of time, space, power, knowledge and wishes surpassed by transcendence where everyone focus only on him for his uplift, which makes a positive perception of fact as "Your life is in your hand", which is not to leave him alone amidst the desires, but offering potentials to upgrade him as ones progression will not overlap with that of the other in the virtual space.

Substitute environment



The purpose of civilisation and society is not to find falut and exclude one from the enviorment , but to include every one for their might incorporating the necessary skill and corrections,aking him to best fit the environment that he lives for his own with confidence and which is man making and education which is throughout life that once we choose a career , it doesn't mean that we reach complete satisfaction and sustenance, upgradation is ever needed and which is not at all a tough task but simply the openness to receive information which is necessitating equality of

status and opportunity to all and respecting the individual dignity. The environment needed for one to give out his best must be provided to him as his right, and his demands be met for the contribution he gives which meets the purpose of salary and upgradation that will reflect in the whole of the system.

Assurance of minimum requirement

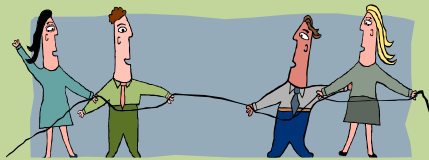


The minimum requirement is the average performance on a task which makes it acceptable when it can be performed excellently well to remain unique and outstanding and the same can be performed below expectation where the outcome gets reflected all through that there should be the goals to reach the minimum requirement. This needs perfect inclusion of all for which the changes are to be made at their interest to make them give out their perception. Any system must assure the minimum requirement of livelihood that brings out the satisfaction of all involved. Making them all to get 100% marks in examination is not making them reach the minimum requirement as the examination has its own flaws and for which if they prepare, they will be losing the innovation and creativity and those who get nearest to centum alone are not intelligent. The success of making every one to live, is making every one to perceive 100% of the content which may be in different ways, when the ultimate requirement is making the concept conceived, there must be alternate ways and substitute environment which make them feel unique and special. When we provide substitute environment, the same make them responsible and that makes intelligent to outstanding, average to intelligent, and dull to average that meeting the minimum requirement is accomplished. There is no rejection at all, at any place, there is always moulding to the aspirations enhancing the skills.

Conclusion



Money is not all in life and for which there has always been a chase which removed the human values and ethics to the core. It is not necessary that we should stick to ethics, which rule over us, but it should be as simple as to convince all involved with conscience. As such there is no defined code of ethics, which is individual specific and the basic requirement of the same for inclusion is conviction. The corruption existing all across the world is not for an individual, but those who proved themselves better for which we all hold the blame and responsibility to correct and bring the existence back to track. The corruptive situation can be made progressive by seeding the soul and conscience which make every one inclusive and authenticity to move for conviction. Authority and ego, greed, and urge to gain and sustain celebrity status make one to yield to ethical dilemmas that they are to be eliminated with simplicity and including simplicity to be nice to all. The skill and contributions of every one needs a difference and that makes progression, where uniform performance sustains the status which is against dynamism and evolution and finally degrades the quality unknowingly though the aim is for perfection and sustainability.



Sustainability can never be achieved , it is an illusionary principle so to say, which must be progression.Nothing can be stopped for progression, but rgulated for comfort and conveninece, which is on degradation since we try to keep up , maintain which need to be amended frequently for changing needs of the public.When humanity and inclusion is there, when competency replaces competition, we shall all progress in our own way.There is no need for differences on any grounds especially on gender, as the creation is to that levekl that both gender play their due role for balance, there need to be pull and push with every activity , which can be construed as the two genders.There will be a reaction for every action, which may not always be opposite ,but complimenting, which could be realised with the pictures presented as pull and push above.One need not always to oppose an action, but react to bring them out, that they will be progressed where we don't lose anything in our progression and this is the relationship expected in the global scenario.This reforms the golden and silver rule of do good to others as you want them to do for you, to pull out the reason for any action that you receive good always.This amandment and alteration to changing situation si spatially miodelled environment to give comfort always.The villages are changing to towns and there remains a transition xone in between to cause the seamless tansition which is permanent , making the town and village pulling out the areas in seam.



The same need to be integrated to become progressive, that villages and towns will have same features that there will be upgradation with equality. The seamless trnasition makes trnasformation form one stage to the next stage where there will be complete transformation, where as integration makes all acihevie the transformation that there will be total development to the next level.The constraints in village life style make one to move to township that there exists urban sprawl.If the opportunities for the advancement in technology , communication, transportation and extensive use of virtual space, be made available in ones native, his own comftrt zone, there will be intergated development all through which shifts the life styles aof all towards a high paradigm.There is no need for boundaries as town, corporation , all made equal with use of online facilities, there need not be boundries as universities, institutions , self supporting, aided and government.All can have interconnectivity mfor the skills that the dirve of the indiviudal makes his goals accomplished.When there is restriction, there will be compromise and adjustmwents, but on liberation, they will come to their best for the experiences they have that "All human beings are born free and equal in dignity and rights. They are endowed with reason and conscience and should act towards one another in a spirit of



brotherhood” holds true for a constructive environment which will be established if they are modeled for spatial existence and living for their own comfort. Spatially modeled environment provides the personal space to every individual that the reach to their best. The conscience brings out their true self that for the conviction and revelation of hidden truth they will be accommodated according to their wish with due correction that changes are made easy. There is no definition at all for anything in the name of regulation and discipline, that the regulations need to be for the authenticity of individual to move up to higher levels on global changes and not to restrict ideas for sustainability in the name of tradition and culture. Values need to change, remain ever dynamic that no opinion is static it keeps on changing that virtues never form the code of reference. Every individual is equal, and subjected to transformation, they seem to be a force for they don’t realize the changes are unavoidable. If we focus on sustainability, we will be forced to face drastic situations, which Japan is facing now, for its “somehow”, growth after the second world war. Atomic energy is against nature and cannot be safe at any level as poison is poison irrespective of the quantity. Their growth pattern and infrastructure development are not in line with nature, but challenging the nature to move across it, and we need to accept nature is the supreme force which can be understood, but not challenged. For the survival, the policy framework of America is too much on protecting nature, sustainability, Japan and China are too much across it for the rapid technological development, India is too much into losing its indigenous technologies for the global pressure, Russia, France and Germany are too much into economic growth by fragmentation giving liberal access to foreign investments that on the whole, the instability towards the global growth must be attended to and all the policy of the nations be oriented for their own best and not to rule over others, share their resources for due returns that we shall all progress which is for the future generation. For this to happen, it becomes essential for all to come under one roof with simplicity, to have only the universal declaration of human rights as the base on which the entire governance built for the local resources which make the progression assured.